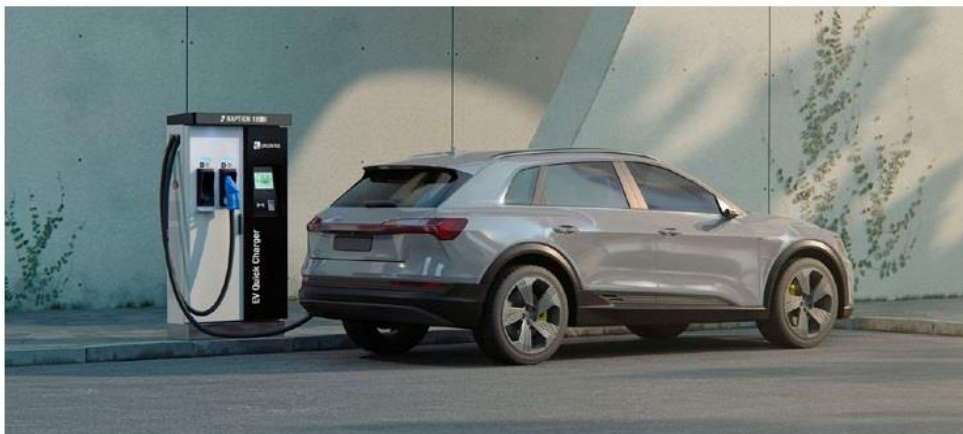
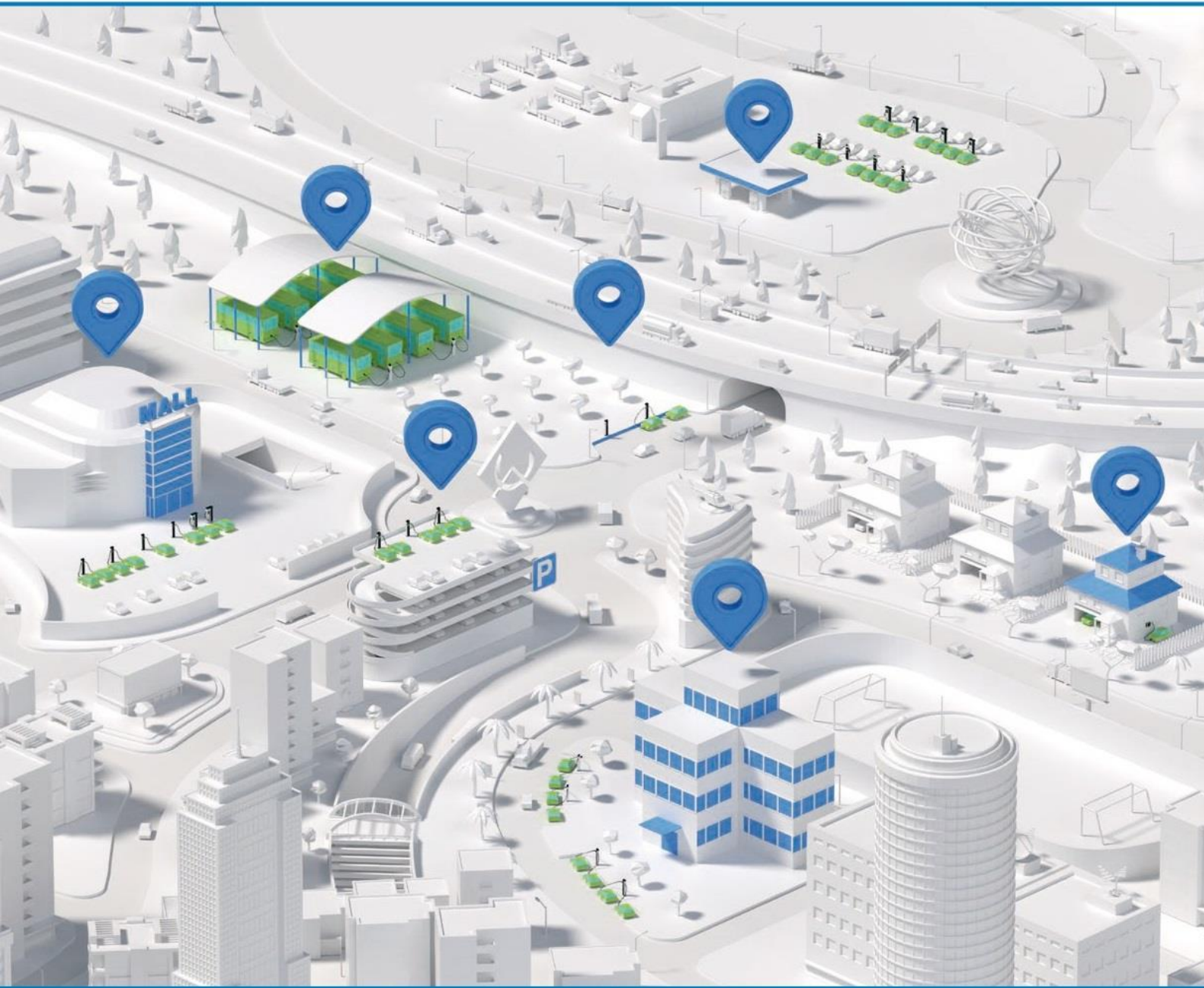


EV Chargers

Application by market segments



80KWTECHNICAL SPECIFICATIONS

Mounting Location	Indoor or Outdoor
Power Output	80KW (40KW X 2/20KW X 4 or (80KW x 1/20X4) optional DC Output
Display	10" HMI with touch screen
Charging Current	200A/250A Max
Power Output (Vdc)	200 - 1,000 Vdc
Connector Type	CCS-2 Female WITH 5 Meters Cable

ELECTRICAL PERFORMANCE

Rated Power	AC 100KVA (3 Phase)
Rated Voltage	415V ($\pm 10\%$) AC 3-Phase, 50 / 60 Hz, L1, L2, L3, N PE
THD(i)	5 %
Standby Power Consumption	nom. voltage: 110 - 180 W
Electrical Protection	Surge protection, Short circuit protection Overload protection, AC overvoltage protection, under-voltage protection, Leakage protection, Insulation Monitoring.
Meter	Class-1
Grounding Detection	30 mA
Conversion Efficiency:	$\geq 94\%$ (peak)
Power Factor	> 0.98

MECHANICAL SPECIFICATION

Enclosure Type	Metal
Protection Degree	IP54
Cooling	Forced Air (variable speed)
Operating Temperature	-20°C ~ +60°C
Humidity	5%-95%
Altitude	2000Mtrs
Warranty	1-Year on Major Components
AMC	UP to 5 Years and Extended warranty also we can provide

INTERFACE

Communication Protocol	OCPP 1.6J remote management
Network connection	GSM, WIFI, ETHERNET
User authentication	Mobile App or RFID card
CMS	We Can Provide with Mobile application

CERTIFICATION & STANDARDS

CODES	IS 17017-1 AIS-138 Part1 IEC 61851-1 IEC 62196-2
-------	---